

GREEN Charter School
Greenville, South Carolina

Report on Financial Statements
Year Ended June 30, 2015

Basic Financial Statements,
Required Supplementary Information,
Other Supplementary Financial Information,
And Independent Auditor's Report

**GREEN Charter School
Greenville, South Carolina
Table of Contents
Year Ended June 30, 2015**

	<u>Page No.</u>
Independent Auditor's Report	1 - 2
Required Supplementary Information (Unaudited)	
Management's Discussion and Analysis	3 - 7
Basic Financial Statements	
Government-wide Financial Statements	
Statement of Net Position	8
Statement of Activities	9
Fund Financial Statements	
Governmental Fund Financial Statements	
Balance Sheet – Governmental Funds	10
Reconciliation of the Balance Sheet of the Governmental Funds to the Statement of Net Position	11
Statement of Revenues, Expenditures, and Changes in Fund Balances – Governmental Funds	12
Reconciliation of the Statement of Revenues, Expenditures, and Changes in Fund Balances of the Governmental Funds to the Statement of Activities	13
Notes to Financial Statements	14 - 22

**GREEN Charter School
Greenville, South Carolina
Table of Contents
Year Ended June 30, 2015**

**Required Supplementary Information Other Than Management's
Discussion and Analysis (Unaudited)**

Budgetary Comparison Schedule – General Fund	23
Notes to Budgetary Comparison Schedule – General Fund	24

Other Supplementary Financial Information

Combining and Individual Fund Statements and Supporting Schedules	
General Fund	
Schedule of Revenues, Expenditures, and Changes in Fund Balance – Budget to Actual	25 - 27
Special Revenue Fund	
Combining Schedule of Revenues, Expenditures, and Changes in Fund Balance	28 - 29
Summary Schedule for Designated State Restricted Grants	30
Education Improvement Act Fund	
Combining Schedule of Revenues, Expenditures, and Changes in Fund Balance – All Programs	31 - 32
Summary Schedule by Program	33
Detailed Schedule of Due to South Carolina Department of Education/Federal Government	34

Compliance Section

Report on Internal Control over Financial Reporting and on Compliance and Other Matters Based on an Audit of Financial Statements Performed in Accordance with <i>Government Auditing Standards</i>	35 - 36
Schedule of Findings and Responses	37



PAYNE, WHITE & SCHMUTZ
— CERTIFIED PUBLIC ACCOUNTANTS, PA —

114 West North First Street, Seneca, SC 29678 (864) 882-1937 (864) 882-0849

Independent Auditor's Report

The Board of Directors
GREEN Charter School

Report on the Financial Statements

We have audited the accompanying financial statements of the governmental activities, each major fund, and the aggregate remaining fund information of GREEN Charter School, as of and for the year ended June 30, 2015, and the related notes to the financial statements, which collectively comprise GREEN Charter School's basic financial statements as listed in the table of contents.

Management's Responsibility for the Financial Statements

GREEN Charter School's management is responsible for the preparation and fair presentation of these financial statements in accordance with accounting principles generally accepted in the United States of America; this includes the design, implementation, and maintenance of internal control relevant to the preparation and fair presentation of financial statements that are free from material misstatement, whether due to fraud or error.

Auditor's Responsibility

Our responsibility is to express opinions on these financial statements based on our audit. We conducted our audit in accordance with auditing standards generally accepted in the United States of America and the standards applicable to financial audits contained in *Government Auditing Standards*, issued by the Comptroller General of the United States. Those standards require that we plan and perform the audit to obtain reasonable assurance about whether the financial statements are free from material misstatement.

An audit involves performing procedures to obtain audit evidence about the amounts and disclosures in the financial statements. The procedures selected depend on the auditor's judgment, including the assessment of the risks of material misstatement of the financial statements, whether due to fraud or error. In making those risk assessments, the auditor considers internal control relevant to the entity's preparation and fair presentation of the financial statements in order to design audit procedures that are appropriate in the circumstances, but not for the purpose of expressing an opinion on the effectiveness of the entity's internal control. Accordingly, we express no such opinion. An audit also includes evaluating the appropriateness of accounting policies used and the reasonableness of significant accounting estimates made by management, as well as evaluating the overall presentation of the financial statements.

We believe that the audit evidence we have obtained is sufficient and appropriate to provide a basis for our audit opinions.

Opinions

In our opinion, the financial statements referred to above present fairly, in all material respects, the respective financial position of the governmental activities, each major fund, and the aggregate remaining fund information of GREEN Charter School, as of June 30, 2015, and the respective changes in financial position and, where applicable, cash flows thereof for the year then ended in accordance with accounting principles generally accepted in the United States of America.

Other Matters

Required Supplementary Information

Accounting principles generally accepted in the United States of America require that the management's discussion and analysis and budgetary comparison information on pages 3–7 and 23–24 be presented to supplement the basic financial statements. Such information, although not a part of the basic financial statements, is required by the Governmental Accounting Standards Board who considers it to be an essential part of financial reporting for placing the basic financial statements in an appropriate operational, economic, or historical context. We have applied certain limited procedures to the required supplementary information in accordance with auditing standards generally accepted in the United States of America, which consisted of inquiries of management about the methods of preparing the information and comparing the information for consistency with management's responses to our inquiries, the basic financial statements, and other knowledge we obtained during our audit of the basic financial statements. We do not express an opinion or provide any assurance on the information because the limited procedures do not provide us with sufficient evidence to express an opinion or provide any assurance.

Other Information

Our audit was conducted for the purpose of forming opinions on the financial statements that collectively comprise GREEN Charter School's basic financial statements. The combining and individual nonmajor fund financial statements are presented for purposes of additional analysis and are not a required part of the basic financial statements.

The combining and individual nonmajor fund financial statements are the responsibility of management and was derived from and relates directly to the underlying accounting and other records used to prepare the basic financial statements. Such information has been subjected to the auditing procedures applied in the audit of the basic financial statements and certain additional procedures, including comparing and reconciling such information directly to the underlying accounting and other records used to prepare the basic financial statements or to the basic financial statements themselves, and other additional procedures in accordance with auditing standards generally accepted in the United States of America. In our opinion, the combining and individual nonmajor fund financial statements are fairly stated, in all material respects, in relation to the basic financial statements as a whole.

Other Reporting Required by *Government Auditing Standards*

In accordance with *Government Auditing Standards*, we have also issued our report dated October 30, 2015 on our consideration of GREEN Charter School's internal control over financial reporting and on our tests of its compliance with certain provisions of laws, regulations, contracts, and grant agreements and other matters. The purpose of that report is to describe the scope of our testing of internal control over financial reporting and compliance and the results of that testing, and not to provide an opinion on internal control over financial reporting or on compliance. That report is an integral part of an audit performed in accordance with *Government Auditing Standards* in considering GREEN Charter School's internal control over financial reporting and compliance.

Payne, White & Schmutz, CPA, PA

Payne, White & Schmutz, CPA, PA

October 30, 2015

Management's Discussion and Analysis

Required Supplementary Information (Unaudited)

GREEN Charter School
Greenville, South Carolina
Required Supplementary Information (Unaudited)
Management's Discussion and Analysis
Year Ended June 30, 2015

As management of GREEN Charter School (the School), we offer readers of the School's audited financial statements this narrative overview and analysis of the financial activities of the School for the fiscal year ended June 30, 2015. We encourage readers to read the information presented herein in conjunction with additional information that we have furnished in the School's financial statements, which follow this narrative.

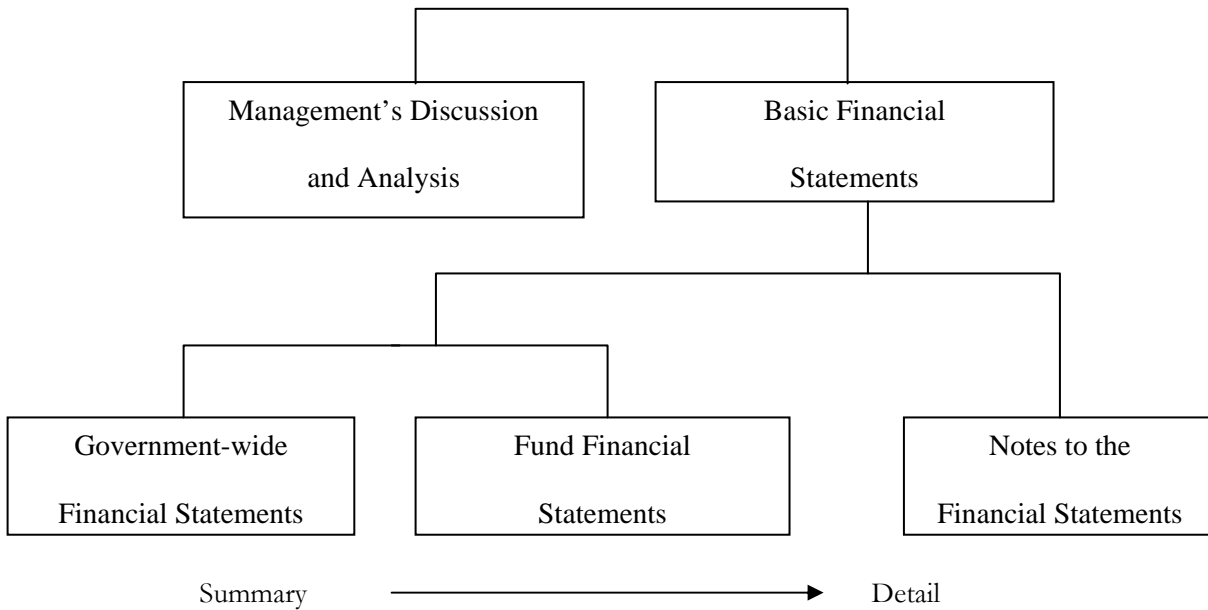
Financial Highlights

- The assets of the School exceeded its liabilities at the close of the fiscal year by \$1,250,149 (*net position*).
- Governmental activities increased the School's net position by \$870,931.
- The School's governmental funds reported combined ending fund balances of \$1,188,255.
- The 2014-2015 135-day headcount is 471.
- The School had no long-term debt as of June 30, 2015.

Overview of the Financial Statements

This discussion and analysis is intended to serve as an introduction to the School's basic financial statements. The basic financial statements consist of three components; 1) government-wide financial statements, 2) fund financial statements, and 3) notes to the financial statements (see Figure 1). The basic financial statements present two distinct financial perspectives of the School through the use of government-wide statements and fund financial statements. In addition to the basic financial statements, this report contains other supplemental information that will enhance the reader's understanding of the financial condition of GREEN Charter School.

Figure 1 - Required Components of Annual Financial Report



GREEN Charter School
Greenville, South Carolina
Required Supplementary Information (Unaudited)
Management's Discussion and Analysis
Year Ended June 30, 2015

Basic Financial Statements

The first two statements in the basic financial statements are the **Government-wide Financial Statements**. They provide both short and long-term information about the School's financial standing.

The next statements are **Fund Financial Statements**. These statements focus on the activities of the individual segments of the School's government. These statements are more detailed than the government-wide financial statements. Their Fund Financial Statements consist of governmental funds.

Immediately following the fund financial statements are the **Notes to Financial Statements** (i.e. "Notes"). The Notes offer a detailed explanation of the data contained in those statements. Next, **Supplemental Information** is provided to show details about the School's funds. Budgetary information for the School also can be found in this section of the statements.

Government-wide Financial Statements

The government-wide financial statements are designed to provide the reader with a broad overview of the School's finances, similar in format to the financial statements of a private-sector business. The government-wide statements provide short and long-term information about the School's financial status, as a whole.

The two government-wide statements report the School's net position and how they have changed. Net position equals the difference between the School's total assets and total liabilities. Measuring net position is one way to gauge the School's financial condition.

The government-wide statements are divided into two categories: 1) governmental activities; and 2) business-type activities. The governmental activities include most of the School's basic functions such as instructional services and business services. These functions are funded almost entirely through state and federal educational funds. The business-type activities are those services that the School charges its students and other customers. Currently the School does not have any business-type activities.

Fund Financial Statements

The fund financial statements provide a more detailed look at the School's most significant activities. A fund is a grouping of related accounts used to maintain control over resources that have been segregated for specific activities or objectives. The School uses fund accounting to ensure and reflect compliance (or non-compliance) with finance-related statutory requirements. All of the funds of the School can be divided into two categories: governmental funds and proprietary funds.

Governmental Funds – Governmental funds are used to account for functions reported as governmental activities in the government-wide financial statements. Most of the School's basic services are accounted for in governmental funds. These funds focus on how assets can readily be converted into cash flow in and out, and monies remaining at year-end that will be available for spending in the next fiscal year. Governmental funds are reported using the modified accrual accounting method, which provides a short-term spending focus. The governmental fund financial statements assist the reader in determining whether there has been an increase or a decrease in the financial resources available to finance the School's programs. The relationship between government activities (reported in the Statement of Net Position and the Statement of Activities) and governmental funds is described in a reconciliation, which is an integral part of the fund financial statements.

**GREEN Charter School
Greenville, South Carolina
Required Supplementary Information (Unaudited)
Management's Discussion and Analysis
Year Ended June 30, 2015**

Fund Financial Statements

The School has elected to adopt an annual budget. The budget incorporates input from the faculty, management, and the Board of Directors of the School and specifies which activities will be pursued and which services the School will provide during the year. It also authorizes the School to obtain funds from identified sources to finance current period activities. The budgetary statement demonstrates how well the School has complied with the budget and whether or not the School has succeeded in providing the services as originally planned.

Notes to Financial Statements – The notes provide additional information essential to facilitating a full understanding of the data provided in the government-wide and fund financial statements. The notes to the financial statements begin on page 15 of this report.

Government-Wide Financial Analysis

As noted earlier, net position may serve over time as one useful indicator of a school's financial condition. The assets of the School exceeded liabilities by \$1,250,149 as of June 30, 2015. \$61,894 reflects the School's investment in net capital assets (e.g. furniture and fixtures, equipment, and leasehold improvements), less any related debt still outstanding that was issued to acquire those items. The School uses these capital assets to provide services to its students; consequently, these assets are not available for future spending. Although the School's investment in its capital assets is reported net of the outstanding related debt, the resources needed to repay that debt must be provided by other sources, since the capital assets cannot be used to liquidate these liabilities. The remaining balance of \$1,188,255 is unrestricted.

Figure 2 - GREEN Charter School's Net Position

	Governmental Activities 2015	Governmental Activities 2014
Current and other assets	\$ 1,343,849	\$ 440,533
Capital assets, net of depreciation	61,894	33,718
Total assets	1,405,743	474,251
Total liabilities	155,594	95,033
Net investment in capital assets	61,894	33,716
Unrestricted	1,188,255	345,502
Total net position	\$ 1,250,149	\$ 379,218

Several aspects of the School's financial operations positively influenced the total unrestricted governmental net position:

- The School adopted an annual budget. The School's performance was measured using this budget on a monthly basis, allowing changes to be made in spending as needed to remain within the confines of the budget.

**GREEN Charter School
Greenville, South Carolina
Required Supplementary Information (Unaudited)
Management's Discussion and Analysis
Year Ended June 30, 2015**

Figure 3 - GREEN Charter School's Changes in Net Position

	Governmental Activities 2015	Governmental Activities 2014
Donations and other revenues	\$ 110,707	\$ 152,048
Charges for services	266,018	4,855
Intergovernmental	3,769,796	2,150,409
Total revenues	<u>4,146,521</u>	<u>2,307,312</u>
Instructional programs	1,758,879	1,041,691
Support services	1,512,739	874,618
Interest and other charges	1,772	-
Community services	2,200	-
Total expenses	<u>3,275,590</u>	<u>1,916,309</u>
Increase in net position	870,931	391,003
Net position July 1	<u>379,218</u>	<u>(11,785)</u>
Net position, June 30	<u><u>\$ 1,250,149</u></u>	<u><u>\$ 379,218</u></u>

Governmental activities - Governmental activities increased the School's net position by \$870,931.

Financial Analysis of the School's Funds

As noted earlier, the School uses fund accounting to ensure and demonstrate compliance with finance-related legal requirements.

Governmental Funds - The focus of the School's governmental funds is to provide information on near-term inflows, outflows, and balances of usable financial resources. Such information is useful in assessing the School's financing requirements. Specifically, unassigned fund balance can be a useful measure of a government's net resources available for spending at the end of the fiscal year.

The general fund is the chief operating fund of the School. At the end of the current fiscal year, unassigned fund balance of the General Fund was \$1,170,680.

**GREEN Charter School
Greenville, South Carolina
Required Supplementary Information (Unaudited)
Management's Discussion and Analysis
Year Ended June 30, 2015**

Capital Asset and Debt Administration

Capital Assets - the School's investment in net capital assets for its governmental activities as of June 30, 2015, totals \$61,894 (net of accumulated depreciation). Capital assets include furniture, fixtures, equipment, and leasehold improvements.

Figure 4 - GREEN Charter School's Capital Assets, Net of Depreciation

	Governmental Activities 2015	Governmental Activities 2014
Furniture and equipment	\$ 61,894	\$ 33,718
Total	\$ 61,894	\$ 33,718

Additional information about the School's capital assets can be found in Note II. of the Basic Financial Statements.

Long-term Debt - As of June 30, 2015, the school had no long-term debt.

General Fund Budgetary Highlights

The positive revenue variance of \$664,426 is due to not budgeting for various local revenue and Fringe Benefit funding.

The positive variance in instruction services of \$23,691 is due to monitoring expenses to keep costs down.

The negative variance in support expenses of \$66,207 is due the School not budgeting for student pupil activities.

Economic Factors

The following key economic indicators reflect the growth and prosperity of the School:

- The School continues to see community support as evidenced by the volunteerism, local organizations donating classroom and office supplies, private donations, and support through fundraising.
- The School has a returning staff of professionals that are committed to the School.
- The School will continue to seek both federal and private grant funds to supplement its EFA funding.

Requests for Information

This report is designed to provide an overview of the School's finances for those with an interest in this area. Questions concerning any of the information found in this report or requests for additional information should be directed to the Director, GREEN Charter School, 1440 Pelham Road, Greenville, SC, 29615, telephone number (864) 288-4134.

Government-Wide Financial Statements

**GREEN CHARTER SCHOOL
GREENVILLE, SOUTH CAROLINA
STATEMENT OF NET POSITION
JUNE 30, 2015**

	Primary Government	
	Governmental Activities	Total
Assets		
Cash and Cash Equivalents	\$ 1,259,679	\$ 1,259,679
Due from Other Governmental Units	61,087	61,087
Other Receivables	5,508	5,508
Other Assets	17,575	17,575
Capital Assets, Net of Depreciation	61,894	61,894
Total Assets	1,405,743	1,405,743
 Liabilities		
Accounts Payable and Other Current Liabilities	149,077	149,077
Unearned Revenue	6,517	6,517
Total Liabilities	155,594	155,594
 Net Position		
Net Investment in Capital Assets	61,894	61,894
Unrestricted Net Position	1,188,255	1,188,255
Total Net Position	\$ 1,250,149	\$ 1,250,149

**GREEN CHARTER SCHOOL
GREENVILLE, SOUTH CAROLINA
STATEMENT OF ACTIVITIES
YEAR ENDED JUNE 30, 2015**

Functions/ Programs	Expenses	Program Revenues		Net (Expense) Revenue and Changes In Net Position	
		Charges for Services	Operating Grants and Contributions	Governmental Activities	Total
Governmental Activities:					
Instruction	\$ 1,758,879	\$ 266,018	\$ -	\$ (1,492,861)	\$ (1,492,861)
Support Services	1,512,739	-	-	(1,512,739)	(1,512,739)
Intergovernmental	-	-	3,769,796	3,769,796	3,769,796
Interest and Other Charges	1,772	-	-	(1,772)	(1,772)
Community Services	2,200	-	-	(2,200)	(2,200)
Total Governmental Activities	<u>3,275,590</u>	<u>266,018</u>	<u>3,769,796</u>	<u>760,224</u>	<u>760,224</u>
Total Primary Government	<u>\$ 3,275,590</u>	<u>\$ 266,018</u>	<u>\$ 3,769,796</u>	<u>760,224</u>	<u>760,224</u>
General Revenues:					
Investment Earnings				90	90
Miscellaneous				110,617	110,617
Total General Revenues				<u>110,707</u>	<u>110,707</u>
Change in Net Position				870,931	870,931
Net Position - Beginning of Year				<u>379,218</u>	<u>379,218</u>
Net Position - End of Year				<u>\$ 1,250,149</u>	<u>\$ 1,250,149</u>

See accompanying notes to financial statements and independent auditor's report.

Fund Financial Statements

**GREEN CHARTER SCHOOL
GREENVILLE, SOUTH CAROLINA
BALANCE SHEET
GOVERNMENTAL FUNDS
JUNE 30, 2015**

	General	Special Revenue	Education Improve- ment Act	Total Governmental Funds
Assets				
Cash and Investments	\$ 1,254,241	\$ 5,438	\$ -	\$ 1,259,679
Due from:				
Other Governmental Units	61,087	-	-	61,087
Other Receivables	5,508	-	-	5,508
Prepaid Expenses	17,575	-	-	17,575
Total Assets	1,338,411	5,438	-	1,343,849
Liabilities and Fund Balances				
Liabilities:				
Accounts Payable and Accrued Liabilities	149,077	-	-	149,077
Unearned Revenue	1,079	5,438	-	6,517
Total Liabilities	150,156	5,438	-	155,594
Fund Balances:				
Nonspendable				
Prepays	17,575	-	-	17,575
Unassigned	1,170,680	-	-	1,170,680
Total Fund Balances	1,188,255	-	-	1,188,255
Total Liabilities and Fund Balances	\$ 1,338,411	\$ 5,438	\$ -	\$ 1,343,849

**GREEN CHARTER SCHOOL
 GREENVILLE, SOUTH CAROLINA
 RECONCILIATION OF THE BALANCE SHEET OF THE
 GOVERNMENTAL FUNDS TO THE STATEMENT OF NET POSITION
 JUNE 30, 2015**

Total Fund Balances - Governmental Funds	\$ 1,188,255
---	--------------

Amounts reported for governmental activities in the statement of Net Position are different because:

Capital assets used in governmental activities are not financial resources, and therefore are not reported in the funds.

Cost of the assets	71,722	
Less: accumulated depreciation	<u>(9,828)</u>	<u>61,894</u>

Total Net Position - Governmental Activities	<u><u>\$ 1,250,149</u></u>
---	-----------------------------------

**GREEN CHARTER SCHOOL
GREENVILLE, SOUTH CAROLINA
STATEMENT OF REVENUES, EXPENDITURES, AND CHANGES IN FUND BALANCES
GOVERNMENTAL FUNDS
YEAR ENDED JUNE 30, 2015**

	<u>General</u>	<u>Special Revenue</u>	<u>Education Improvement Act</u>	<u>Total Governmental Funds</u>
Revenues				
Earnings on Investments	\$ 90	\$ -	\$ -	\$ 90
Student Fees	266,018	-	-	266,018
Other Local	62,141	48,476	-	110,617
Total Local	<u>328,249</u>	<u>48,476</u>	<u>-</u>	<u>376,725</u>
Intergovernmental Sources	1,518,177	200,120	2,051,499	3,769,796
Total Intergovernmental	<u>1,518,177</u>	<u>200,120</u>	<u>2,051,499</u>	<u>3,769,796</u>
Total Revenues	<u>1,846,426</u>	<u>248,596</u>	<u>2,051,499</u>	<u>4,146,521</u>
Expenditures				
Current:				
Instruction	434,809	96,650	1,225,419	1,756,878
Support Services	540,917	141,860	826,080	1,508,857
Community Services	2,200	-	-	2,200
Capital Outlay	35,831	-	-	35,831
Total Expenditures	<u>1,013,757</u>	<u>238,510</u>	<u>2,051,499</u>	<u>3,303,766</u>
Excess (Deficiency) of Revenues Over Expenditures	<u>832,669</u>	<u>10,086</u>	<u>-</u>	<u>842,755</u>
Other Financing Sources (Uses)				
Transfers In	10,086			10,086
Transfers Out	-	(10,086)	-	(10,086)
Total Other Financing Sources (Uses)	<u>10,086</u>	<u>(10,086)</u>	<u>-</u>	<u>-</u>
Net Change in Fund Balances	842,755	-	-	842,755
Fund Balances - Beginning of Year	<u>345,500</u>	<u>-</u>	<u>-</u>	<u>345,500</u>
Fund Balances - End of Year	<u>\$ 1,188,255</u>	<u>\$ -</u>	<u>\$ -</u>	<u>\$ 1,188,255</u>

**GREEN CHARTER SCHOOL
 GREENVILLE, SOUTH CAROLINA
 RECONCILIATION OF THE STATEMENT OF REVENUES,
 EXPENDITURES, AND CHANGES IN FUND BALANCES OF THE
 GOVERNMENTAL FUNDS TO THE STATEMENT OF ACTIVITIES
 YEAR ENDED JUNE 30, 2015**

Net Change in Fund Balances - Governmental Funds \$ 842,755

Amounts reported for the governmental activities in the Statement of Activities are different because:

Governmental funds report capital outlay as expenditures. However, in the Statement of Activities the cost of these assets is allocated over their estimated useful lives and reported as depreciation expense.

Capitalized capital outlays in the current period	35,829	
Depreciation expense in the current period	<u>(7,653)</u>	<u>28,176</u>

Change in Net Position - Governmental Activities \$ 870,931

Notes to Financial Statements

**GREEN CHARTER SCHOOL
GREENVILLE, SOUTH CAROLINA
NOTES TO FINANCIAL STATEMENTS
YEAR ENDED JUNE 30, 2015**

I. Summary of Significant Accounting Policies:

Greenville Renewable Energy Education Charter School is known as GREEN Charter School. GREEN Charter School (the School) was created in 2012 through a charter granted by the South Carolina Public Charter School District (SCPCSD). The School began operations in 2013. The School is a discretely presented component unit of SCPCSD.

The School's mission is to establish improved science and sustainability learning opportunities that stimulate scientifically literate individuals, workforce, and leadership through world class and challenging science teaching standards. The School will instill in students the desire to continually expand their intellects and use the content knowledge and skills they have acquired to participate in and responsibly shape the quality and direction of a complex world with ever increasing energy and sustainability demands.

The school seeks to offer this format of education to Kindergarten through twelfth grade students.

A. Reporting Entity

The Board of Directors (the "Board") of the School determines the operating policies and such policies are implemented by the school's staff. As of June 30, 2015, the School's volunteer Board of Directors is as follows:

Board Members

A. Kadir Yildirim	Baran Menguoglu
Amanda Yilmaz	Imtiaz Haque
Gurcan Comert	Selcuk Filiz

These financial statements present the School which is a component unit of South Carolina Public Charter School District. The School is a legally separate entity that is in substance part of the School District's operation.

B. Basis of Presentation

Government-wide Financial Statements:

The government-wide financial statements (i.e., the Statement of Net Position and the Statement of Activities) report information on all of the non-fiduciary activities of the School. For the most part, the effect of inter-fund activity has been removed from these statements. Governmental activities, which normally are supported by intergovernmental revenues, are reported separately from business-type activities, which rely to a significant extent on fees and charges for support.

The Statement of Activities demonstrates the degree to which the direct expenses of a given function or segment is offset by program revenues. Direct expenses are those that are clearly identifiable with a specific function or segment. Program revenues include 1) charges to customers or applicants who purchase, use, or directly benefit from goods, services, or privileges provided by a given function or segment and 2) grants and contributions that are restricted to meeting the operational or capital requirements of a particular function or segment. Taxes and other items not properly included among program revenues are reported instead as general revenues.

**GREEN CHARTER SCHOOL
GREENVILLE, SOUTH CAROLINA
NOTES TO FINANCIAL STATEMENTS
YEAR ENDED JUNE 30, 2015**

I. Summary of Significant Accounting Policies (continued):

Fund Financial Statements:

The School uses funds to maintain its financial records during the fiscal year. Fund accounting is designed to demonstrate legal compliance and to aid management by segregating transactions related to certain School functions and activities. A fund is defined as a fiscal and accounting entity with a self-balancing set of accounts. Separate financial statements are provided for governmental funds and enterprise funds. Major individual governmental funds are reported as separate columns in the fund financial statements.

The accounting and financial reporting treatment applied to a fund is determined by its measurement focus. All governmental fund types are accounted for using a flow of current financial resources measurement focus. The financial statements for governmental funds are a balance sheet, which generally includes only current assets and current liabilities, and a statement of revenues, expenditures, and changes in fund balances, which reports on the sources (i.e., revenues and other financing sources) and uses (i.e., expenditures and other financing uses) of current financial resources. The following are the School's major governmental funds:

1. General Fund - The General Operating Fund of the School is used to account for all financial resources except those required to be accounted for in another fund. All revenue, charges for services, Education Finance Act revenue, and miscellaneous revenue are recorded in this fund except amounts which are specifically collected in a fiduciary capacity. Operational expenditures for general instruction, support services, general administration, and other departments of the School are paid through the General Fund.
2. Special Revenue Fund - Special Revenue Funds account for the operations of federal and state projects, which are required by the South Carolina State Department of Education to be accounted for in separate funds.
3. Education Improvement Act Fund - This fund is used to account for the School's expenditures as a result of receiving state funds used in a comprehensive education reform plan which are required to be accounted for in separate programs and strategies.

The School also holds a Fiduciary Fund – This fund is used to account for assets on behalf of outside parties, including other governments, or on behalf of other funds within the government. The School's fiduciary funds consist of agency funds, which are custodial in nature and do not involve measurement of results of operations. The agency funds are used to account for amounts held for students and faculty activity organizations.

The School did not have any non-major funds as of June 30, 2015.

**GREEN CHARTER SCHOOL
GREENVILLE, SOUTH CAROLINA
NOTES TO FINANCIAL STATEMENTS
YEAR ENDED JUNE 30, 2015**

I. Summary of Significant Accounting Policies (continued):

C. Measurement Focus and Basis of Accounting

The government-wide financial statements are reported using the economic resources measurement focus and the accrual basis of accounting. Revenues are recorded when earned and expenses are recorded when a liability is incurred regardless of the timing of related cash flows. Grants and similar items are recognized as revenue as soon as all eligibility requirements imposed by the provider have been met.

Governmental fund financial statements are reported using the current financial resources measurement focus and the modified accrual basis of accounting. Revenues are recognized as soon as they are both measurable and available. Revenues are considered to be available when they are collectible within the current period or soon enough thereafter to pay liabilities of the current period. For this purpose, the School considers revenues to be available if they are collected within 60 days of the end of the current fiscal period. Expenditures generally are recorded when a liability is incurred, as under accrual accounting. General capital asset acquisitions are reported as expenditures in governmental funds. Proceeds of general long-term debt and acquisitions under capital leases are reported as other financing sources.

All proprietary fund types are accounted for on a flow of economic resources measurement focus. With this measurement focus, all assets and all liabilities associated with the operation of these funds are included on the statement of net position. The statement of revenues, expenses and changes in fund net position presents increases (i.e., revenues) and decreases (i.e., expenses) in net total assets. The statement of cash flows provides information about how the School finances and meets cash flow needs of its proprietary activities.

Private-sector standards of accounting and financial reporting issued prior to December 1, 1989, generally are followed in the government-wide financial statements to the extent that those standards do not conflict with or contradict guidance of the Governmental Accounting Standards Board.

Non-exchange transactions are transactions in which the School receives value without directly giving equal value in return, including grants, entitlements and donations. Revenue from grants, entitlements and donations are recognized in the fiscal year in which all eligibility requirements have been met. On the modified accrual basis, revenue from non-exchange transactions must also be available before it can be recognized.

Amounts reported as program revenues include operating grants and contributions.

When both restricted and unrestricted resources are available for use, it is the School's policy to use restricted resources first, then unrestricted resources as they are needed.

The effect of inter-fund activity has been eliminated from the government-wide financial statements.

**GREEN CHARTER SCHOOL
GREENVILLE, SOUTH CAROLINA
NOTES TO FINANCIAL STATEMENTS
YEAR ENDED JUNE 30, 2015**

I. Summary of Significant Accounting Policies (continued):

D. Assets, Liabilities, and Equity

Deposits and Investments

The School's cash and cash equivalents are defined as short-term, highly liquid investments with an original maturity of three months or less, that are both readily convertible to known amounts of cash, and so near their maturity that they present no significant risk of changes in value because of changes in interest rates.

State statutes authorized the School to invest in the following:

1. Obligations of the United States and agencies thereof;
2. General obligations of the State of South Carolina or any of its political units;
3. Banks and savings and loan association deposits to the extent insured by the Federal Deposit Insurance Corporation;
4. Certificates of deposit and repurchase agreements collateralized by securities of the type described in (1) and (2) above held by a third party as escrow agent or custodian, of a market value not less than the amount of the certificates of deposit and repurchase agreements so secured, including interest; and
5. No-load open and closed-end management type investment companies or investment trusts registered under the Investment Company Act of 1940, as amended, where the investment is made by a bank or trust company or savings and loan association or other financial institution when acting as trustee or agent for a bond or other debt issue of that local government unit.

The School has not formally adopted a deposit and investment policy. The School has no investments as of June 30, 2015.

Capital Assets

Capital assets, which include leasehold improvement, classroom equipment, and office equipment, are reported in the governmental activities in the government-wide financial statements. Capital assets are defined by the government as assets with an initial, individual cost of more than \$5,000 and an estimated useful life in excess of two years. Such assets are recorded at historical cost or estimated historical cost if purchased or constructed. Donated capital assets are recorded at estimated fair market value at the date of donation.

The costs of normal maintenance and repairs that do not add to the value of the asset or materially extend assets lives are not capitalized.

Property and equipment are depreciated using the straight line method over the following estimated useful lives:

Assets	Years
Leasehold Improvements	Life of Lease
Furniture and Fixtures	3 - 5
Equipment	3 - 5

**GREEN CHARTER SCHOOL
GREENVILLE, SOUTH CAROLINA
NOTES TO FINANCIAL STATEMENTS
YEAR ENDED JUNE 30, 2015**

I. Summary of Significant Accounting Policies (continued):

Transfers From and To Other Funds

There was a transfer from the Special Revenue Fund to the General fund in the amount of \$10,086, which represents excess revenue from the Special Revenue Fund in relation to food service for year ended June 30, 2015.

Unearned Revenues

Unearned revenues arise when resources have been received but not yet earned. Federal, state, local and private program grant revenues received and not yet expended by the School are recorded as unearned revenue. In subsequent periods, when both revenue recognition criteria are met, or when the School has a legal claim to the grant proceeds, the liability for unearned revenue is removed from the balance sheet and revenue is recognized.

Due from Other Governmental Units

Amounts due from other governmental units represents amounts owed to the School from the District for grant/contractual funding related to the school year ending June 30, 2015 that has been earned but not yet received as of June 30, 2015. The balance as of year-end was \$61,087, which represented \$50,407 due from the SC Department of Education, \$5,133 due from the SC Charter School District in relation to the Education Finance Act funding, and \$5,547 due from the USDA.

Reservations and Designations of Fund Balances

Government-wide Financial Statements

Equity is classified as net position and displayed in three components:

- a. Net investment in capital assets – Consists of capital assets including restricted capital assets, net of accumulated depreciation and reduced by the outstanding balances of any bonds, mortgages, notes, or other borrowings that are attributable to the acquisition, construction, or improvement of those assets.
- b. Restricted net position – Consists of net position with constraints placed on the use either by (1) external groups such as creditors, grantors, contributors, or laws or regulations of other governments; or (2) law through constitutional provisions or enabling legislation.
- c. Unrestricted net position – All other net position that does not meet the definition of “restricted” or “Net investment in capital assets”.

**GREEN CHARTER SCHOOL
GREENVILLE, SOUTH CAROLINA
NOTES TO FINANCIAL STATEMENTS
YEAR ENDED JUNE 30, 2015**

I. Summary of Significant Accounting Policies (continued):

Fund Financial Statements

The School's fund balance amounts are reported within one of the following fund balance categories.

- a. *Non-spendable* – includes fund balance amounts that cannot be spent either because it is not in spendable form or because of legal or contractual constraints (such as inventories, prepaids, long-term loans and notes receivable and property held for resale).
- b. *Restricted* – includes fund balance amounts that are constrained for specific purposes which are externally imposed by providers, such as creditors or amounts constrained due to constitutional provisions or enabling legislation.
- c. *Committed* – includes fund balance amounts that are constrained for specific purposes that are internally imposed by the government through formal action of the highest level of decision making authority and does not lapse at year-end.
- d. *Assigned* – includes fund balance amounts that are intended to be used for specific purposes that are neither considered restricted or committed. Fund Balance may be assigned by the Director.
- e. *Unassigned* – is the residual classification for the government's general fund and includes all spendable amounts not contained in the other classifications.

Order of Fund Balance Spending Policy

The School's policy is to apply expenditures against restricted fund balance, committed fund balance, assigned fund balance, and unassigned fund balance.

The School does not currently have policies in place for committed and assigned fund balances. First non-spendable fund balances are determined. Then restricted fund balances for specific purposes are identified (not including non-spendable amounts). Any remaining fund balance amounts are evaluated for committed or assigned purposes and the remaining are classified as unassigned fund balance.

It is possible for the non-general funds to have negative unassigned fund balance when non-spendable amounts plus the restricted fund balances for specific purposes amounts exceed the positive fund balance for the non-general fund.

E. Accounting Estimates

The preparation of financial statements in accordance with generally accepted accounting principles requires the School's management to make estimates and assumptions. These estimates and assumptions affect the reported amounts of assets and liabilities and disclosure of contingent assets and liabilities at the date of the financial statements and the reported amounts of revenues and expenses/expenditures during the reporting period. Actual results could differ from those estimates.

**GREEN CHARTER SCHOOL
GREENVILLE, SOUTH CAROLINA
NOTES TO FINANCIAL STATEMENTS
YEAR ENDED JUNE 30, 2015**

II. Detailed Notes on All Funds:

A. Deposits and Investments

Deposits

Custodial credit risk for deposits. Custodial credit risk for deposits is the risk that, in the event of a bank failure, the government's deposits might not be recovered. The School does not have a deposit policy for custodial credit risk but follows the investment policy statues of the State of South Carolina. As of June 30, 2015, \$1,009,893 of the School's bank balances of \$1,259,893 is exposed to custodial credit risk.

B. Capital Assets

Capital asset activity for the year ended June 30, 2015, is as follows:

	<u>June 30, 2014</u>	<u>Increases</u>	<u>June 30, 2015</u>
Governmental Activites:			
Capitla Assets, Being Depreciated			
Furniture and equipment	\$ 35,893	\$ 35,829	\$ 71,722
Total capital assets, being depreciated	<u>35,893</u>	<u>35,829</u>	<u>71,722</u>
Total capital assets, cost	<u>35,893</u>	<u>35,829</u>	<u>71,722</u>
Less accumulated depreciation:			
Furniture and equipment	<u>2,175</u>	<u>7,653</u>	<u>9,828</u>
Total accumulated depreciation	<u>2,175</u>	<u>7,653</u>	<u>9,828</u>
Total capital assets, being depreciated, net	<u>33,718</u>	<u>28,176</u>	<u>61,894</u>
Total Governmental Activites Capital Assets, Net	<u>\$ 33,718</u>	<u>\$ 28,176</u>	<u>\$ 61,894</u>

**GREEN CHARTER SCHOOL
GREENVILLE, SOUTH CAROLINA
NOTES TO FINANCIAL STATEMENTS
YEAR ENDED JUNE 30, 2015**

II. Detailed Notes on All Funds (continued):

Depreciation expense of \$1,999 and \$5,654 is charged to instruction and support services, respectively.

C. Long-Term Obligations

Operating Leases

The School leases their facilities and pays \$28,226 per month, expiring August 31, 2023.

The total future minimum payments for June 30:

<u>Fiscal Year</u>	<u>Amount</u>
2016	\$ 501,305
2017	516,471
2018	532,046
2019	547,927
2020	564,370
Beyond Year 5	<u>1,899,465</u>
Total minimum payments	<u>\$ 4,561,584</u>

Lease expense for the year ended June 30, 2015 is \$472,905.

**GREEN CHARTER SCHOOL
GREENVILLE, SOUTH CAROLINA
NOTES TO FINANCIAL STATEMENTS
YEAR ENDED JUNE 30, 2015**

III. Other Information:

A. Related Parties

The School is a component unit of the SCPCSD's financial statements. Annual funding allocated from the SCPCSD to the School during the year ended June 30, 2015 is \$3,719,252. The District additionally provides services to the School at fair market value. The School paid the District \$164,454 for these services.

B. Contingencies

Grants

The School participates in a number of federally assisted grant programs. These programs are subject to program compliance audits by the grantors or their representatives. The amount of program expenditures which may be disallowed by the granting agencies cannot be determined at this time although the School expects such amounts, if any, to be immaterial.

Litigation

The School may be party to various legal proceedings incidental to its operation. Certain claims, suits and complaints arising in the ordinary course of business may be filed or are pending. In the opinion of management, all such matters are adequately covered by insurance or if not so covered, are without merit, or involve such amounts as would not have a significant effect on the financial position of the School if disposed of unfavorably.

C. Retirement Plan

Plan Description

The School maintains a 403(b) with National Benefit Services. Employees contribute through payroll deduction to the plan and the School will match a percentage of the employee's contributions. These provisions were established by the School's Board of Directors. The School's contributions to the plan for the year ended June 30, 2015 is \$54,818.

D. Subsequent Events Evaluation

Subsequent events have been evaluated through October 30, 2015, which is the date the financial statements were available to be issued.

**Required Supplementary Information Other Than Management's
Discussion and Analysis (Unaudited)**

**GREEN CHARTER SCHOOL
GREENVILLE, SOUTH CAROLINA
REQUIRED SUPPLEMENTARY INFORMATION (UNAUDITED)
BUDGETARY COMPARISON SCHEDULE - GENERAL FUND
YEAR ENDED JUNE 30, 2015**

	<u>Budgeted Amounts</u>		<u>Actual</u>
	<u>Original</u>	<u>Final</u>	
Revenues			
Local	\$ 10,000	\$ 10,000	\$ 328,249
State	1,172,000	1,172,000	1,518,177
Total Revenues	<u>1,182,000</u>	<u>1,182,000</u>	<u>1,846,426</u>
Expenditures			
Current:			
Instruction	458,500	458,500	434,809
Support Services	510,541	510,541	576,748
Community Services	-	-	2,200
Total Expenditures	<u>969,041</u>	<u>969,041</u>	<u>1,013,757</u>
Excess (Deficiency) of Revenues Over Expenditures	212,959	212,959	832,669
Other Financing Sources (Uses)	<u>-</u>	<u>-</u>	<u>10,086</u>
Net Change In Fund Balance	212,959	212,959	842,755
Fund Balances - Beginning of Year	<u>345,500</u>	<u>345,500</u>	<u>345,500</u>
Fund Balances - End of Year	<u><u>\$ 558,459</u></u>	<u><u>\$ 558,459</u></u>	<u><u>\$ 1,188,255</u></u>

See accompanying notes to budgetary comparison schedule - general fund.

**GREEN CHARTER SCHOOL
REQUIRED SUPPLEMENTARY INFORMATION (UNAUDITED)
NOTES TO BUDGETARY COMPARISON SCHEDULE - GENERAL FUND
YEAR ENDED JUNE 30, 2015**

Note A - Budgetary Basis

The General Fund budget is adopted on a basis consistent with generally accepted accounting principles. The budget for the General Fund is prepared by function and activity and includes current year estimates for the next fiscal year. Fund expenditures may not exceed amounts within the total budget without the approval of the Board. Line item transfers within functions are approved by the Board of Directors. Budget amounts reflected in the accompanying schedule represent the adopted budget and any revisions during the fiscal year.

Budgets for the Special Revenue Fund, EIA Fund, and Pupil Activity Fund are approved by the appropriate granting agencies, and as such, these budgets are not part of the School's legally adopted budget and are not presented in the Budgetary Comparison Schedule.

Other Supplementary Financial Information

General Fund

To account for all financial resources except those required to be accounted for in another fund. All intergovernmental revenues and miscellaneous revenues are recorded in this fund. Operational expenditures for general education, support services and other departments of the School are paid through the General Fund.

The following Schedule of Revenues, Expenditures and Changes in Fund Balance – Budget and Actual for the General Fund has been prepared in the format mandated by the South Carolina State Department of Education. The account numbers shown on the statement are also mandated by the South Carolina Department of Education.

**GREEN CHARTER SCHOOL
GREENVILLE, SOUTH CAROLINA
GENERAL FUND
SCHEDULE OF REVENUES, EXPENDITURES, AND CHANGES
IN FUND BALANCE - BUDGET TO ACTUAL
YEAR ENDED JUNE 30, 2015**

	<u>Budget</u>	<u>Actual</u>	<u>Variance Favorable (Unfavorable)</u>
Revenues			
1000 Revenue from Local Sources			
1510 Interest on Investments	\$ -	\$ 90	\$ 90
1740 Student Fees	-	266,018	266,018
1920 Contributions & Donations Private Sources	10,000	54,499	44,499
1950 Refund of Prior Year's Expenditures	-	1,154	1,154
1990 Miscellaneous Local Revenue			
1999 Revenue from Other Local Sources	-	6,488	6,488
Total Local Sources	<u>10,000</u>	<u>328,249</u>	<u>318,249</u>
3000 Revenue from State Sources			
3180 Fringe Benefits Employer Contributions (No Carryover Provision)	-	360,829	360,829
3300 Education Finance Act			
3310 Full-time Programs			
3311 Kindergarten	160,000	158,599	(1,401)
3312 Primary	320,000	319,152	(848)
3313 Elementary	480,000	460,525	(19,475)
3316 Speech Handicapped	76,000	46,817	(29,183)
3320 Part-Time Programs:			
3323 Learning Disabilities	37,000	43,862	6,862
3324 Hearing Handicapped	-	5,399	5,399
3330 Miscellaneous EFA Programs:			
3332 High Achieving Students	24,000	31,825	7,825
3334 Limited English Proficiency	28,000	28,149	149
3351 Academic Assistance	15,000	8,823	(6,177)
3352 Pupils in Poverty	32,000	54,197	22,197
Total Revenue from State Sources	<u>1,172,000</u>	<u>1,518,177</u>	<u>346,177</u>
Total Revenue All Sources	<u>1,182,000</u>	<u>1,846,426</u>	<u>664,426</u>
Expenditures			
100 Instruction			
110 General Instruction			
111 Kindergarten Programs			
100 Salaries	20,000	1,543	18,457
200 Employee Benefits	35,000	27,532	7,468
400 Supplies and Materials	15,000	8,133	6,867
112 Primary Programs			
100 Salaries	55,000	33,121	21,879
200 Employee Benefits	75,000	67,366	7,634
300 Purchased Services	10,000	9,440	560
400 Supplies and Materials	45,000	24,843	20,157
113 Elementary Programs			
100 Salaries	85,000	51,605	33,395
200 Employee Benefits	75,000	68,015	6,985
300 Purchased Services	-	263	(263)
400 Supplies and Materials	10,000	3,651	6,349

**GREEN CHARTER SCHOOL
GREENVILLE, SOUTH CAROLINA
GENERAL FUND
SCHEDULE OF REVENUES, EXPENDITURES, AND CHANGES
IN FUND BALANCE - BUDGET TO ACTUAL
YEAR ENDED JUNE 30, 2015**

	<u>Budget</u>	<u>Actual</u>	<u>Variance Favorable (Unfavorable)</u>
120 Exceptional Programs			
126 Speech Handicapped			
300 Purchased Services	-	290	(290)
400 Supplies and Materials	5,000	5,152	(152)
127 Learning Disabilities			
100 Salaries	15,000	3,105	11,895
200 Employee Benefits	5,000	1,491	3,509
300 Purchased Services	500	274	226
400 Supplies and Materials	1,500	1,033	467
175 Instructional Programs Beyond Regular School Day			
100 Salaries	5,000	2,589	2,411
200 Employee Benefits	500	232	268
400 Supplies and Materials	1,000	494	506
190 Instructional Pupil Activity			
100 Salaries	-	643	(643)
300 Purchased Services	-	16,466	(16,466)
400 Supplies and Materials	-	107,528	(107,528)
Total Instruction	<u>458,500</u>	<u>434,809</u>	<u>23,691</u>
200 Support Services			
210 Pupil Services			
213 Health Services			
400 Supplies and Materials	-	75	(75)
214 Psychological Services			
300 Purchased Services	5,000	2,852	2,148
215 Exceptional Program Services			
100 Salaries	5,000	3,917	1,083
200 Employee Benefits	500	300	200
300 Purchased Services	-	115	(115)
400 Supplies and Materials	-	26	(26)
220 Instructional Staff Services			
221 Improvement of Instruction Curriculum Development			
300 Purchased Services	60,000	63,837	(3,837)
224 Improv. of Instr. - In-svc and Staff Training			
300 Purchased Services	10,000	7,835	2,165
400 Supplies and Materials	-	1,592	(1,592)
230 General Administration Services			
231 Board of Education			
300 Purchased Services	5,000	3,302	1,698
318 Audit Fees	10,000	6,500	3,500
400 Supplies and Materials	-	17,224	(17,224)
600 Other Objects	3,000	1,610	1,390
233 School Administration			
100 Salaries	12,000	11,290	710
200 Employee Benefits	35,000	31,672	3,328
300 Purchased Services	8,500	4,323	4,177
400 Supplies and Materials	23,000	22,649	351
600 Other Objects	-	3,362	(3,362)

**GREEN CHARTER SCHOOL
GREENVILLE, SOUTH CAROLINA
GENERAL FUND
SCHEDULE OF REVENUES, EXPENDITURES, AND CHANGES
IN FUND BALANCE - BUDGET TO ACTUAL
YEAR ENDED JUNE 30, 2015**

	<u>Budget</u>	<u>Actual</u>	<u>Variance Favorable (Unfavorable)</u>
250 Finance and Operations Services			
252 Fiscal Services			
300 Purchased Services	5,000	53,814	(48,814)
600 Other Objects	500	666	(166)
253 Facilities Acquisition and Construction			
300 Purchased Services	150,000	105,623	44,377
540 Equipment	-	16,919	(16,919)
254 Operation and Maintenance of Plant			
100 Salaries	-	1,700	(1,700)
200 Employee Benefits	-	46	(46)
300 Purchased Services	92,000	61,932	30,068
321 Water	10,000	2,879	7,121
400 Supplies and Materials	-	10,945	(10,945)
470 Energy	30,000	9,495	20,505
258 Security			
300 Purchased Services	-	2,108	(2,108)
260 Central Support Services			
263 Information Services			
300 Purchased Services	15,000	9,375	5,625
400 Supplies and Materials	-	61	(61)
266 Technology and Data Processing Services			
100 Salaries	8,000	6,916	1,084
200 Employee Benefits	8,000	8,273	(273)
300 Purchased Services	15,041	2,121	12,920
400 Supplies and Materials	-	49,982	(49,982)
500 Capital Outlay	-	18,912	(18,912)
270 Support Services Pupil Activity			
271 Pupil Services Activities			
300 Purchased Services	-	2,582	(2,582)
600 Other Objects	-	29,918	(29,918)
Total Support Services	<u>510,541</u>	<u>576,748</u>	<u>(66,207)</u>
300 Community Services			
390 Other Community Services			
300 Purchased Services	-	2,200	(2,200)
Total Community Services	<u>-</u>	<u>2,200</u>	<u>(2,200)</u>
Total Expenditures	<u>969,041</u>	<u>1,013,757</u>	<u>(44,716)</u>
Excess/(Deficiency) of Revenues over Expenditures	212,959	832,669	619,710
Other Financing Sources (Uses)			
Interfund Transfers, From (To) Other Funds			
5220 Transfer from Special Revenue Fund	-	10,086	10,086
Total Other Financing Sources (Uses)	<u>-</u>	<u>10,086</u>	<u>10,086</u>
Net Change In Fund Balance	212,959	842,755	629,796
Fund Balances - Beginning of Year	<u>345,500</u>	<u>345,500</u>	<u>-</u>
Fund Balances - End of Year	<u>\$ 558,459</u>	<u>\$ 1,188,255</u>	<u>\$ 629,796</u>

Special Revenue Funds

To account for the operations of federal and state projects, which are required to be accounted for in separate funds.

Special Revenue Fund – This fund is used to account for all federal and state projects except for those subject to Education Improvement Act requirements.

Education Improvement Act Fund – This fund is used to account for the School's expenditures as a result of receiving state funds used in a comprehensive education reform plan which are required to be accounted for in separate programs and strategies.

The following combining and individual fund statements and schedules have been prepared in the format mandated by the South Carolina State Department of Education. The account numbers shown on the various statements are also mandated by the South Carolina Department of Education.

**GREEN CHARTER SCHOOL
GREENVILLE, SOUTH CAROLINA
SPECIAL REVENUE FUND - SPECIAL REVENUE PROGRAMS
COMBINING SCHEDULE OF REVENUES, EXPENDITURES, AND
CHANGES IN FUND BALANCE
YEAR ENDED JUNE 30, 2015**

	IDEA	Other Designated Restricted State Grants	Other Special Revenue Programs	Total
Revenues				
1000 Revenue from Local Sources				
1990 Miscellaneous Local Revenue				
1999 Revenue from Other Local Sources	\$ -	\$ -	\$ 48,476	\$ 48,476
Total Local Sources	-	-	48,476	48,476
3000 Revenue from State Sources				
3100 Restricted State Funding				
3130 Special Programs				
3135 Reading Coaches	-	31,365	-	31,365
3177 Summer Reading Camp	-	2,561	-	2,561
3190 Miscellaneous Restricted State Grants				
3198 Tech Professional Development	-	999	-	999
3600 Education Lottery Act Revenue				
3607 6-8 Enhancement	-	616	-	616
3610 K-5 Enhancement	-	20,101	-	20,101
3630 K-12 Technology Initiative	-	5,088	-	5,088
Total State Sources	-	60,730	-	60,730
4000 Revenue from Federal Sources				
4300 Elementary and Secondary Education Act of 1965 (ESEA)				
4320 Public Charter School Grants	-	-	75,000	75,000
4500 Programs for Children with Disabilities				
4510 Individuals With Disabilities Education Act (IDEA)	22,965	-	-	22,965
4900 Other Federal Sources				
4999 Revenue from Other Federal Sources	-	-	41,425	41,425
Total Federal Sources	22,965	-	116,425	139,390
Total Revenue All Sources	22,965	60,730	164,901	248,596

**GREEN CHARTER SCHOOL
GREENVILLE, SOUTH CAROLINA
SPECIAL REVENUE FUND - SPECIAL REVENUE PROGRAMS
COMBINING SCHEDULE OF REVENUES, EXPENDITURES, AND
CHANGES IN FUND BALANCE
YEAR ENDED JUNE 30, 2015**

	IDEA	Other Designated Restricted State Grants	Other Special Revenue Programs	Total
Expenditures				
100 Instruction				
110 General Instruction				
111 Kindergarten Programs				
100 Salaries	-	12,099	-	12,099
112 Primary Programs				
100 Salaries	549	10,563	-	11,112
400 Supplies and Materials	-	-	50,407	50,407
113 Elementary Programs				
100 Salaries	-	616	-	616
120 Exceptional Programs				
127 Learning Disabilities				
100 Salaries	22,416	-	-	22,416
Total Instruction	22,965	23,278	50,407	96,650
200 Support Services				
220 Support Services - Instructional Staff				
221 Improvement of Instruction - Curriculum Development				
100 Salaries	-	29,275	-	29,275
200 Employee Benefits	-	2,090	-	2,090
300 Purchased Services	-	-	14,186	14,186
224 Improvement of Instruction In-service and Staff Training				
300 Purchased Services	-	999	-	999
230 Support Services - General Administration				
231 Board of Education				
600 Other Objects	-	-	10,407	10,407
256 Food Service				
100 Salaries	-	-	3,852	3,852
200 Employee Benefits	-	-	607	607
300 Purchased Services	-	-	116	116
400 Supplies and Materials	-	-	75,240	75,240
260 Central Support Services				
266 Technology and Data Proc. Svc				
100 Salaries	-	5,088	-	5,088
Total Support Services	-	37,452	104,408	141,860
Total Expenditures	22,965	60,730	154,815	238,510
Excess/(Deficiency) of Revenues over Expenditures	-	-	10,086	10,086
Other Financing Sources (Uses)				
Transfers To General Fund	-	-	(10,086)	(10,086)
Net Change in Fund Balance	-	-	-	-
Fund Balances - Beginning of Year	-	-	-	-
Fund Balances - End of Year	\$ -	\$ -	\$ -	\$ -

**GREEN CHARTER SCHOOL
GREENVILLE, SOUTH CAROLINA
SPECIAL REVENUE FUND - SPECIAL REVENUE PROGRAMS
SUMMARY SCHEDULE FOR DESIGNATED STATE RESTRICTED GRANTS
YEAR ENDED JUNE 30, 2015**

<u>Subfund</u>	<u>Revenue</u>	<u>Programs</u>	<u>Revenues</u>	<u>Expenditures</u>	<u>Unearned Revenue</u>
935	3135	Reading Coaches	\$ 31,365	\$ 31,365	\$ -
926	3177	Summer Reading Camp	2,561	2,561	-
965	3620	Digital Instruction Material	-	-	4,828
918	3198	Tech Professional Development	999	999	610
960	3610	K-5 Enhancement	20,101	20,101	-
967	3607	6-8 Enhancement	616	616	-
963	3630	K-12 Technology Initiative	5,088	5,088	-
	Totals		<u>\$ 60,730</u>	<u>\$ 60,730</u>	<u>\$ 5,438</u>

**GREEN CHARTER SCHOOL
GREENVILLE, SOUTH CAROLINA
SPECIAL REVENUE FUND - EDUCATION IMPROVEMENT ACT FUND
COMBINING SCHEDULE OF REVENUES, EXPENDITURES, AND
CHANGES IN FUND BALANCE - ALL PROGRAMS
YEAR ENDED JUNE 30, 2015**

Revenues

3000 Revenue from State Sources

3500 Education Improvement Act:		
3511 Professional Development	\$	1,568
3518 Formative Assessment		4,876
3526 Refurbishment of K-8 Science Kits		1,672
3550 Teacher Salary Increase		51,253
3555 School Employer Contributions		8,867
3558 Reading		1,251
3577 Teacher Supplies		6,000
3583 Charter School Funding		1,961,615
3595 EEDA Supplies and Materials		142
3597 Aid to Districts		14,255
		<u>2,051,499</u>

Total State Sources 2,051,499

Total Revenue All Sources 2,051,499

Expenditures

100 Instruction

110 General Instruction		
111 Kindergarten Programs		
100 Salaries		210,154
200 Employee Benefits		22,099
400 Supplies and Materials		500
112 Primary Programs		
100 Salaries		304,358
200 Employee Benefits		32,270
400 Supplies and Materials		2,172
113 Elementary Programs		
100 Salaries		513,478
200 Employee Benefits		55,271
400 Supplies and Materials		50,886
120 Exceptional Programs		
127 Learning Disabilities		
100 Salaries		15,682
200 Employee Benefits		2,744
170 Summer School Program		
175 Instructional Programs Beyond Regular School Day		
100 Salaries		14,695
200 Employee Benefits		1,110
		<u>1,225,419</u>

Total Instruction 1,225,419

**GREEN CHARTER SCHOOL
GREENVILLE, SOUTH CAROLINA
SPECIAL REVENUE FUND - EDUCATION IMPROVEMENT ACT FUND
COMBINING SCHEDULE OF REVENUES, EXPENDITURES, AND
CHANGES IN FUND BALANCE - ALL PROGRAMS
YEAR ENDED JUNE 30, 2015**

200 Support Services	
210 Support Services - Students	
215 Exceptional Program Services	
100 Salaries	35,250
200 Employee Benefits	7,509
220 Instructional Staff Services	
221 Improvement of Instruction-Curriculum Development	
300 Purchased Services	142
224 Improv. of Instr. - In-service and Staff Training	
300 Purchased Services	8,676
230 General Administration Services	
233 School Administration	
100 Salaries	223,724
200 Employee Benefits	21,538
300 Purchased Services	8,824
400 Supplies and Materials	999
250 Support Services - Finances and Operations	
252 Fiscal Services	
300 Purchased Services	24,837
254 Operation and Maintenance of Plant	
100 Salaries	18,925
200 Employee Benefits	1,721
300 Purchased Services	441,231
256 Food Services	
100 Salaries	8,285
200 Employee Benefits	857
260 Central Support Services	
266 Technology and Data Processing Services	
100 Salaries	21,083
200 Employee Benefits	2,479
	826,080
Total Support Services	
Total Expenditures	2,051,499
Excess (Deficiency) of Revenues over Expenditures	-
Net Change in Fund Balance	-
Fund Balances - Beginning of Year	-
Fund Balances - End of Year	\$ -

**GREEN CHARTER SCHOOL
 GREENVILLE, SOUTH CAROLINA
 SPECIAL REVENUE FUND - EDUCATION IMPROVEMENT ACT
 SUMMARY SCHEDULE BY PROGRAM
 YEAR ENDED JUNE 30, 2015**

Program	<u>Revenues</u>	<u>Expenditures</u>
3500 Education Improvement Act:		
3511 Professional Development	\$ 1,568	\$ 1,568
3518 Formative Assessment	4,876	4,876
3526 Refurbishment of K-8 Science Kits	1,672	1,672
3550 Teacher Salary Increase	51,253	51,253
3555 School Employer Contributions	8,867	8,867
3558 Reading	1,251	1,251
3577 Teacher Supplies	6,000	6,000
3583 Charter School Funding	1,961,615	1,961,615
3595 EEDA Supplies and Materials	142	142
3597 Aid to Districts	14,255	14,255
	<u> </u>	<u> </u>
Totals	<u>\$ 2,051,499</u>	<u>\$ 2,051,499</u>

**GREEN CHARTER SCHOOL
 GREENVILLE, SOUTH CAROLINA
 DETAILED SCHEDULE OF DUE TO
 SOUTH CAROLINA DEPARTMENT OF EDUCATION/FEDERAL GOVERNMENT**

Program	Grant or Project Number and FY	Revenue & Subfund Codes	Description	Amount Due to SCDE or Federal Government	Status of Amounts Due to Grantors
---------	--------------------------------	-------------------------	-------------	--	-----------------------------------

No funds are due to state/federal government

Compliance Section



PAYNE, WHITE & SCHMUTZ
— CERTIFIED PUBLIC ACCOUNTANTS, PA —

114 West North First Street, Seneca, SC 29678 (864) 882-1937 (864) 882-0849

**REPORT ON INTERNAL CONTROL OVER FINANCIAL REPORTING AND ON
COMPLIANCE AND OTHER MATTERS BASED ON AN AUDIT OF FINANCIAL
STATEMENTS PERFORMED IN ACCORDANCE
WITH *GOVERNMENT AUDITING STANDARDS***

Independent Auditor's Report

The Governing Body
GREEN Charter School

We have audited, in accordance with auditing standards generally accepted in the United States of America and the standards applicable to financial audits contained in *Government Auditing Standards* issued by the Comptroller General of the United States, the financial statements of the governmental activities, each major fund, and the aggregate remaining fund information of GREEN Charter School as of and for the year ended June 30, 2015, and the related notes to the financial statements, which collectively comprise GREEN Charter School's basic financial statements, and have issued our report thereon dated October 30, 2015.

Internal Control over Financial Reporting

In planning and performing our audit of the financial statements, we considered GREEN Charter School's internal control over financial reporting (internal control) to determine the audit procedures that are appropriate in the circumstances for the purpose of expressing our opinions on the financial statements, but not for the purpose of expressing an opinion on the effectiveness of GREEN Charter School's internal control. Accordingly, we do not express an opinion on the effectiveness of GREEN Charter School's internal control.

A *deficiency in internal control* exists when the design or operation of a control does not allow management or employees in the normal course of performing their assigned functions, to prevent, or detect and correct misstatements on a timely basis. A *material weakness* is a deficiency, or a combination of deficiencies, in internal control, such that there is a reasonable possibility that a material misstatement of the entity's financial statements will not be prevented, or detected and corrected on a timely basis. A *significant deficiency* is a deficiency, or a combination of deficiencies, in internal control that is less severe than a material weakness, yet important enough to merit attention by those charged with governance.

Our consideration of internal control over financial reporting was for the limited purpose described in the first paragraph of this section and was not designed to identify all deficiencies in internal control over financial reporting that might be material weaknesses or significant deficiencies. Given these limitations, during our audit we did not identify any deficiencies in internal control over financial reporting that we consider to be material weaknesses. However, material weaknesses may exist that have not been identified.

Compliance and Other Matters

As part of obtaining reasonable assurance about whether GREEN Charter School's financial statements are free from material misstatement, we performed tests of its compliance with certain provisions of laws, regulations, contracts, and grant agreements, noncompliance with which could have a direct and material effect on the determination of financial statement amounts. However, providing an opinion on compliance with those provisions was not an objective of our audit and, accordingly, we do not express such an opinion. The results of our tests disclosed no instances of noncompliance or other matters that are required to be reported under *Government Auditing Standards*.

Purpose of this Report

The purpose of this report is solely to describe the scope of our testing of internal control and compliance and the results of that testing, and not to provide an opinion on the effectiveness of the entity's internal control or on compliance. This report is an integral part of an audit performed in accordance with *Government Auditing Standards* in considering the entity's internal control and compliance. Accordingly, this communication is not suitable for any other purpose.

Payne, White & Schmutz, CPA, PA

Payne, White & Schmutz, CPA, PA

October 30, 2015

**GREEN CHARTER SCHOOL
GREENVILLE, SOUTH CAROLINA
SCHEDULE OF FINDINGS AND RESPONSES
YEAR ENDED JUNE 30, 2015**

I. Summary of Independent Auditor's Results

Financial Statements

Type of report issued:	Unmodified		
Internal Control over financial reporting: Material weaknesses identified?	<u> </u> Yes	<u> X </u> No	
Significant deficiencies identified that are not considered to be material weaknesses?	<u> </u> Yes	<u> X </u> No	
Non-compliance material to financial statements noted?	<u> </u> Yes	<u> X </u> No	

II. Financial Statements Findings

None noted.